

## 2755 Series

**THOMAS**  
by Gardner Denver

### FEATURES

- > Monolithic head
- > Epoxy coated wetted parts
- > 17mm shaft & bearing compliment
- > Oil-less operation
- > Permanently lubricated bearings
- > Stainless steel valves
- > Die-cast aluminum components
- > Proven WOB-L technology
- > Field service capability
- > Thermally protected motor
- > Designed and tested per Agency standards
- > RoHS compliant

Declaration documentation available upon request

### TYPICAL APPLICATIONS

- > Blood or Laboratory Analyzers
- > Beverage Dispensing
- > Dental Equipment
- > Ozone Generators
- > Business Machines (Copiers)
- > Vacuum Frames
- > Waveguide Pressurization
- > Packaging Equipment

### BASE MODELS

**2755BE75**

(115/60/1)

**2755BGHI75**

(230/601/1 & 220-240/50/1)

**2755CE60**

(115/60/1)

**2755CGHI60**

(230/601/1 & 220-240/50/1)

**2755TE48/40**

(115/601/1)

**2755TGH152/48**

(230/60/1 & 220-240/50/1)

**2755VEF75**

(115/601/1 & 110/50/1)

**2755VHI75**

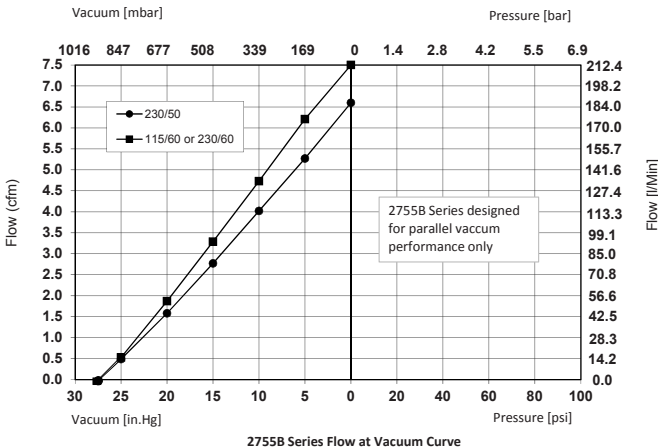
(220-240/50/1)



**WOB-L**

2755 Series

|               |                             |
|---------------|-----------------------------|
| Flow          | Up to 7.5 cfm (212.4 l/min) |
| Max. pressure | N/A                         |
| Max. vacuum   | Up to 93% local barometer   |



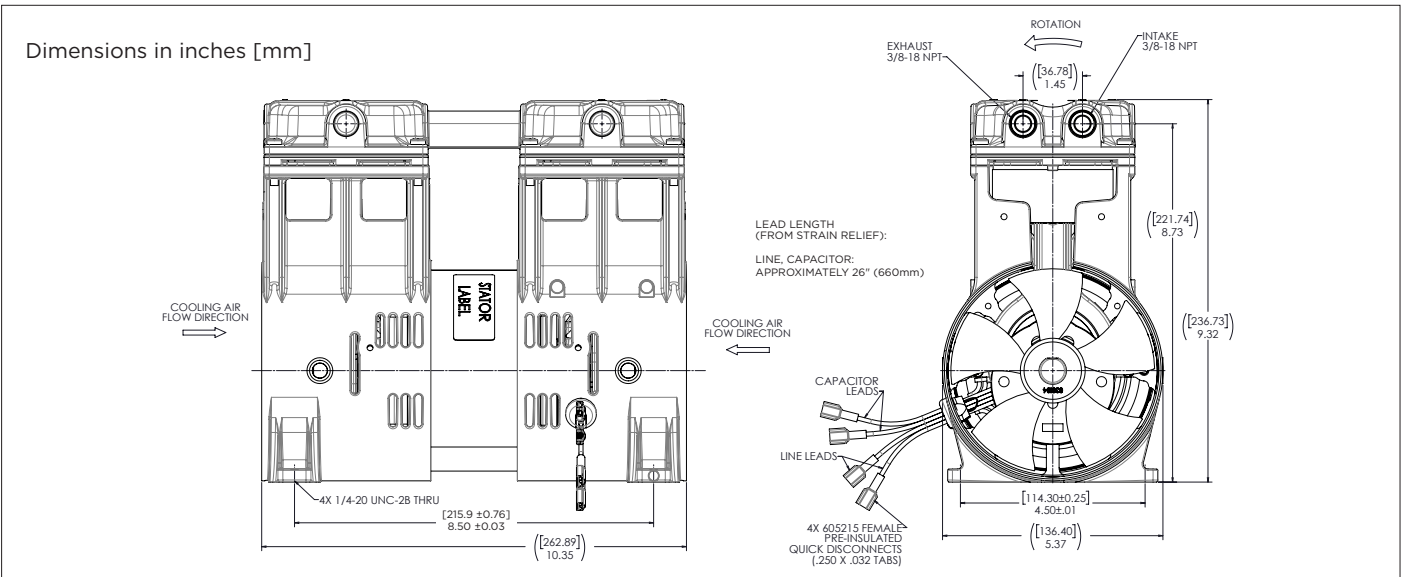
NOTE: All test values are nominal and for reference only. They are not guaranteed maximum or minimum limits, nor do they imply mean or median.

| PERFORMANCE DATA        |                       | T17-0289              |                       | T17-0290 |  |
|-------------------------|-----------------------|-----------------------|-----------------------|----------|--|
| Model Number            | 2755BE75              | 2755BGHI75            |                       |          |  |
| Head Configuration      | Vacuum parallel flow  | Vacuum parallel flow  |                       |          |  |
| Stroke                  | 0.75 in. (19.0 mm)    | 0.75 in. (19.0 mm)    |                       |          |  |
| Nominal voltage input   | 115/60/1              | 230/50/1              | 230/60/1              |          |  |
| Max. open air flow      | 7.5 cfm (212.4 l/min) | 6.6 cfm (186.9 l/min) | 7.5 cfm (212.4 l/min) |          |  |
| Max. rated vacuum       | 93% local barometer   | 93% local baro.       | 93% local baro.       |          |  |
| Current at rated vacuum | 2.3A                  | 1.2A                  | 1.4A                  |          |  |
| Power at rated vacuum   | 230W                  | 240W                  | 270W                  |          |  |
| Speed at rated vacuum   | 1775 rpm              | 1475 rpm              | 1765 rpm              |          |  |
| Max. vacuum restart     | N/A                   | N/A                   |                       |          |  |
| Max. pressure           | N/A                   | N/A                   |                       |          |  |
| Max. pressure restart   | N/A                   | N/A                   |                       |          |  |

| ELECTRICAL DATA                   |                                   |                                   |      |  |
|-----------------------------------|-----------------------------------|-----------------------------------|------|--|
| Motor type (Capacitance)          | P.S.C. [20 µF]                    | P.S.C. [12.5 µF]                  |      |  |
| Motor locked rotor current        | 17.7A                             | 8.7A                              | 7.8A |  |
| Motor insulation class            | B                                 | B                                 |      |  |
| Thermal switch (Open temperature) | Yes [293°F (145°C)]               | Yes [275°F (135°C)]               |      |  |
| Lead wire color, gauge            | Brown(hot), blue(neutral), 18 AWG | Brown(hot), blue(neutral), 18 AWG |      |  |
| Capacitor lead wire color, gauge  | Black, black, 18 AWG              | Red, red, 18 AWG                  |      |  |

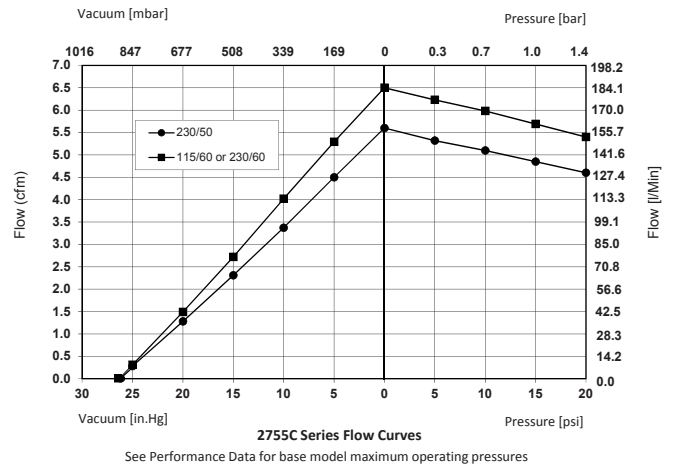
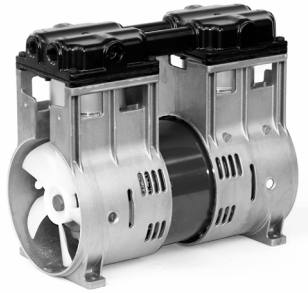
| GENERAL DATA                  |                              |                              |  |
|-------------------------------|------------------------------|------------------------------|--|
| Operating ambient temperature | 50°F to 104°F (10°C to 40°C) | 50°F to 104°F (10°C to 40°C) |  |
| Safety Certification          | UR                           | TUV                          |  |
| Net weight                    | 21.5 lbs (9.8 kg)            | 22.6 lbs (10.3 kg)           |  |

PRODUCT DIMENSIONS



# 2755 Series

|               |                           |
|---------------|---------------------------|
| Flow          | Up to 6.5 cfm (184 l/min) |
| Max. pressure | Up to 20 psi (1.4 bar)    |
| Max. vacuum   | Up to 91% local barometer |



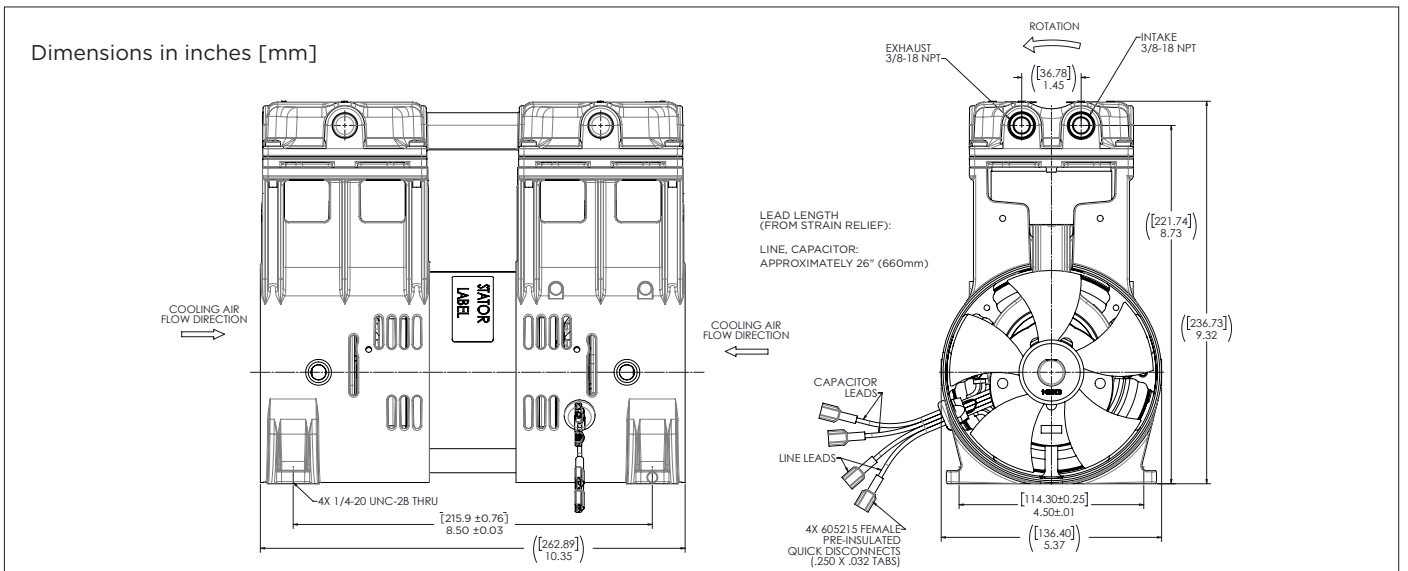
NOTE: All test values are nominal and for reference only. They are not guaranteed maximum or minimum limits, nor do they imply mean or median.

| PERFORMANCE DATA          |  | T17-0291                      | T17-0292                                  |
|---------------------------|--|-------------------------------|---|
| Model Number              |  | 2755CE60                      | 2755CGHI60                                |
| Head Configuration        |  | Pressure/vacuum parallel flow | Pressure/vacuum parallel flow             |
| Stroke                    |  | 0.60 in. (15.2 mm)            | 0.60 in. (15.2 mm)                        |
| Nominal voltage input     |  | 115/60/1                      | 230/50/1 230/60/1                         |
| Max. open air flow        |  | 6.5 cfm (184 l/min)           | 5.6 cfm (158.6 l/min) 6.5 cfm (184 l/min) |
| Max. rated pressure       |  | 15 psi (1.0 bar)              | 20 psi (1.4 bar) 20 psi (1.4 bar)         |
| Current at rated pressure |  | 4.7A                          | 2.0A 5.2A                                 |
| Power at rated pressure   |  | 520W                          | 460W 580W                                 |
| Speed at rated pressure   |  | 1690 rpm                      | 1415 rpm 1660rpm                          |
| Max. pressure restart     |  | N/A                           | N/A                                       |
| Max. vacuum               |  | 91% local barometer           | 91% local barometer                       |
| Max. vacuum restart       |  | N/A                           | N/A                                       |

| ELECTRICAL DATA                   |   |
|-----------------------------------|---|
| Motor type (Capacitance)          | P.S.C. [20 µF] P.S.C. [12.5 µF]                                     |
| Motor locked rotor current        | 17.7A 8.7A 7.8A   |
| Motor insulation class            | B B   |
| Thermal switch (Open temperature) | Yes [293°F (145°C)] Yes [275°F (135°C)]                             |
| Lead wire color, gauge            | Brown(hot), blue(neutral), 18 AWG Brown(hot), blue(neutral), 18 AWG |
| Capacitor lead wire color, gauge  | Black, black, 18 AWG Red, red, 18 AWG                               |

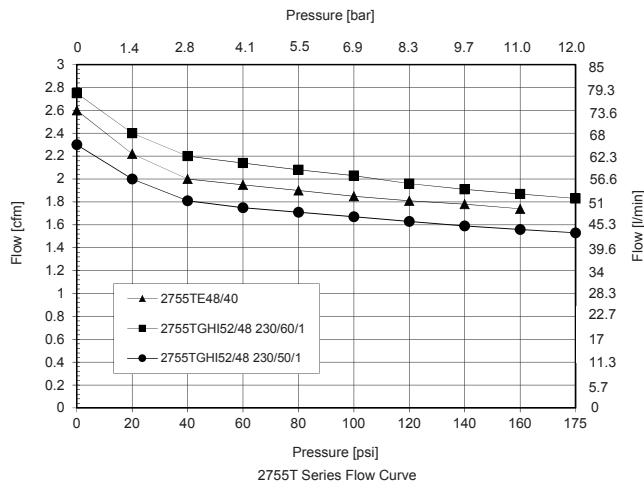
| GENERAL DATA                  |   |
|-------------------------------|---|
| Operating ambient temperature | 50°F to 104°F (10°C TO 40°C) 50°F to 104°F (10°C TO 40°C) |
| Safety Certification          | UR TUV  |
| Net weight                    | 21.5 lbs (9.8 kg) 22.6 lbs (10.3 kg)                      |

## PRODUCT DIMENSIONS



2755 Series

|               |                             |
|---------------|-----------------------------|
| Flow          | Up to 2.75 cfm (77.9 l/min) |
| Max. pressure | Up to 175 psi (12.1 bar)    |
| Max. vacuum   | N/A                         |



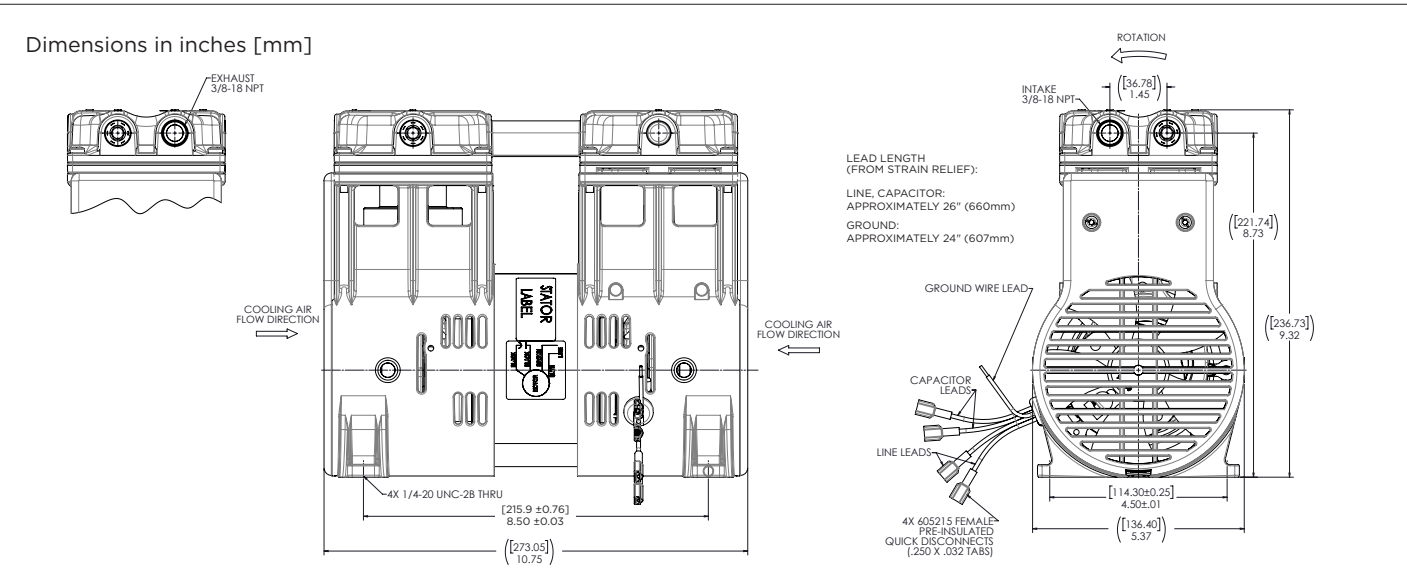
NOTE: All test values are nominal and for reference only. They are not guaranteed maximum or minimum limits, nor do they imply mean or median.

| PERFORMANCE DATA           |  | T17-0273                             | T17-0271                                      |
|----------------------------|--|--------------------------------------|---|
| Model Number               |  | 2755TE48/40                          | 2755TGH152/48                                 |
| Head Configuration         |  | Two stage pressure flow              | Two stage pressure flow                       |
| Stroke (Primary/secondary) |  | 0.48 in. (12.2 mm)/0.40 in. (10.2mm) | 0.52 in (13.2 mm) / 0.48 in. (12.2 mm)        |
| Nominal voltage input      |  | 115/60/1                             | 230/50/1      230/60/1                        |
| Max. open air flow         |  | 2.60 cfm (73.6 l/min)                | 2.30 cfm (65.1 l/min)    2.75 cfm(77.9 l/min) |
| Max. rated pressure        |  | 160 psi (11.0 bar)                   | 175 psi (12.1 bar)    175 psi (12.1 bar)      |
| Current at rated pressure  |  | 4.8A                                 | 2.6A      2.9A                                |
| Power at rated pressure    |  | 540W                                 | 580W      645W                                |
| Speed at rated pressure    |  | 1680 rpm                             | 1380 rpm    1640 rpm                          |
| Max. pressure restart      |  | N/A                                  | N/A   |
| Max. vacuum                |  | N/A                                  | N/A   |
| Max. vacuum restart        |  | N/A                                  | N/A   |

| ELECTRICAL DATA                   |                                   |                                   |      |
|-----------------------------------|-----------------------------------|-----------------------------------|------|
| Motor type (Capacitance)          | P.S.C. [20 µF]                    | P.S.C. [15 µF]                    |      |
| Motor locked rotor current        | 17.7A                             | 8.5A                              | 7.7A |
| Motor insulation class            | B                                 | B                                 |      |
| Thermal switch (Open temperature) | Yes [293°F (145°C)]               | Yes [275°F (135°C)]               |      |
| Lead wire color, gauge            | Brown(hot), blue(neutral), 18 AWG | Brown(hot), blue(neutral), 18 AWG |      |
| Capacitor lead wire color, gauge  | Black, black, 18 AWG              | Red, red 18 AWG                   |      |

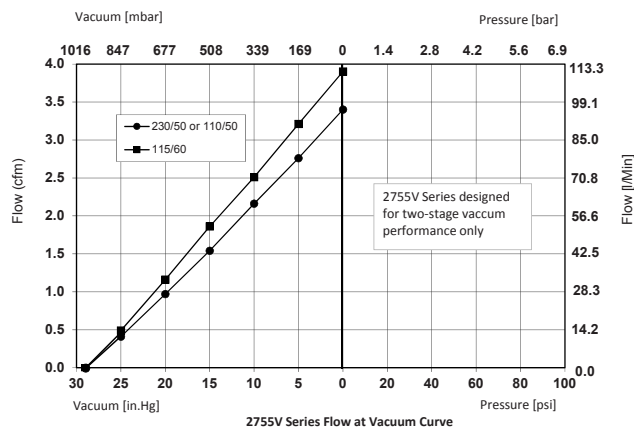
| GENERAL DATA                  |                              |                              |  |
|-------------------------------|------------------------------|------------------------------|--|
| Operating ambient temperature | 50°F to 104°F (10°C TO 40°C) | 50°F to 104°F (10°C TO 40°C) |  |
| Safety Certification          | UR                           | TUV                          |  |
| Net weight                    | 21.7 lbs (9.8 kg)            | 23.0 lbs (10.4 kg)           |  |

PRODUCT DIMENSIONS



## 2755 Series

|               |                             |
|---------------|-----------------------------|
| Flow          | Up to 3.9 cfm (110.4 l/min) |
| Max. pressure | N/A                         |
| Max. vacuum   | Up to 98% local barometer   |



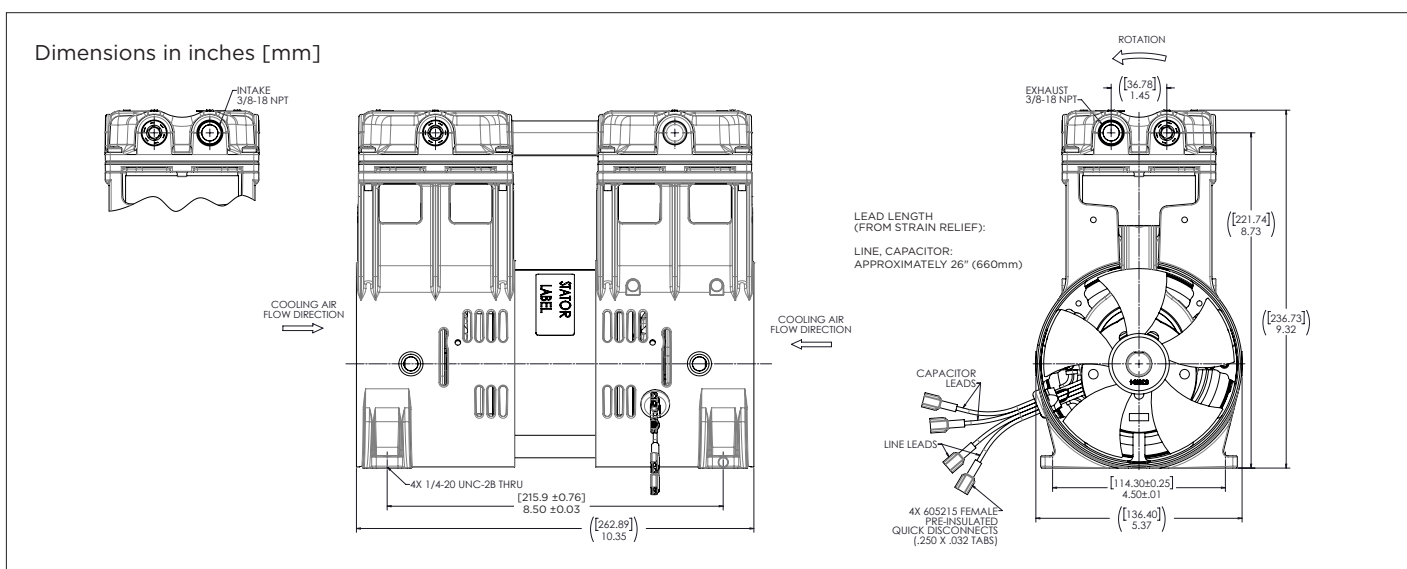
NOTE: All test values are nominal and for reference only. They are not guaranteed maximum or minimum limits, nor do they imply mean or median.

| PERFORMANCE DATA        |                       | T17-0293             | T17-0294              |
|-------------------------|-----------------------|----------------------|-----------------------|
| Model Number            | 2755VEF75             |                      | 2755VHI75             |
| Head Configuration      | Two stage vacuum flow |                      | Two stage vacuum flow |
| Stroke                  | 0.75 in. (19.0 mm)    |                      | 0.75 in. (19.0 mm)    |
| Nominal voltage input   | 115/60/1              | 110/50/1             | 230/50/1              |
| Max. open air flow      | 3.9 cfm (110.4 l/min) | 3.4 cfm (96.3 l/min) | 3.4 cfm (96.3 l/min)  |
| Max. rated vacuum       | 98% local baro.       | 98% local baro.      | 98% local barometer   |
| Current at rated vacuum | 2.3A                  | 3.5A                 | 1.2A                  |
| Power at rated vacuum   | 230W                  | 220W                 | 220W                  |
| Speed at rated vacuum   | 1775 rpm              | 1480 rpm             | 1480 rpm              |
| Max. vacuum restart     | N/A                   |                      | N/A                   |
| Max. pressure           | N/A                   |                      | N/A                   |
| Max. pressure restart   | N/A                   |                      | N/A                   |

| ELECTRICAL DATA                   |                                   |
|-----------------------------------|-----------------------------------|
| Motor type (Capacitance)          | P.S.C. [20 µF]                    |
| Motor locked rotor current        | 17.7A                             |
| Motor insulation class            | B                                 |
| Thermal switch (Open temperature) | Yes [293°F (145°C)]               |
| Lead wire color, gauge            | Brown(hot), blue(neutral), 18 AWG |
| Capacitor lead wire color, gauge  | Black, black, 18 AWG              |

| GENERAL DATA                  |                              |
|-------------------------------|------------------------------|
| Operating ambient temperature | 50°F to 104°F (10°C TO 40°C) |
| Safety Certification          | UR                           |
| Net weight                    | 21.5 lbs (9.8 kg)            |

## PRODUCT DIMENSIONS



PUMP AND COMPRESSOR SOLUTIONS FOR OEMS WORLDWIDE

[gd-thomas.com](http://gd-thomas.com)



**Gardner Denver Thomas GmbH**

Livry-Gargan-Str. 10  
82256 Fürstenfeldbruck  
Germany  
T +49 8141 2280 0  
F +49 8141 8892136  
[thomas.de@gardnerdenver.com](mailto:thomas.de@gardnerdenver.com)

**Gardner Denver Thomas Pneumatic Systems (Wuxi) Co. Ltd.**

1 New Dong'an Road, Shuofang Town  
Xinwu District, Wuxi  
Jiangsu, 214142 China  
T +86 510 6878 2258  
F +86 510 6878 2200  
[thomas.cn@gardnerdenver.com](mailto:thomas.cn@gardnerdenver.com)

**THOMAS**  
by Gardner Denver

**Gardner Denver Thomas, Inc.**

1419 Illinois Avenue  
Sheboygan, WI 53081  
USA  
T +1 920 4574891  
F +1 920 4514276  
[td.usa@gardnerdenver.com](mailto:td.usa@gardnerdenver.com)

The information presented in this material is based on technical data and test results of nominal units. It is believed to be accurate and reliable and is offered as an aid to help in the selection of Thomas products. It is the responsibility of the user to determine the suitability of the product for the intended use and the user assumes all risk and liability in connection there with. Thomas does not warrant, guarantee or assume any obligation or liability in connection with this information.

Models presented in this catalog are representative of the product family. Photos of products pictured in this catalog do not necessarily represent a specific model number. To obtain further information for custom options, contact your local Thomas office.

Printed in U.S.A Form No. 850-4026 09/2017 © Gardner Denver Thomas, Inc. All rights reserved.